



Supermarket & Convenience

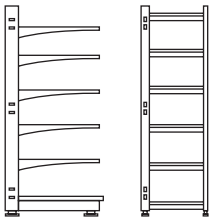


1

100% modular design

2

Choose from outrigger or cantilever style shelving

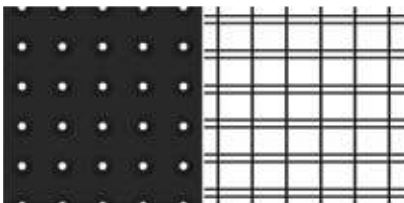


3

1500 or 2200mm upright heights available

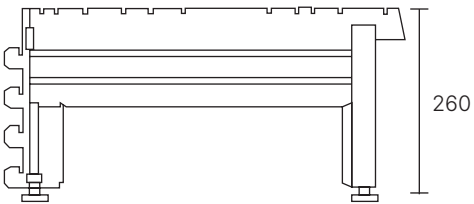
4

Choose from mesh or volcano punched backpanels



5

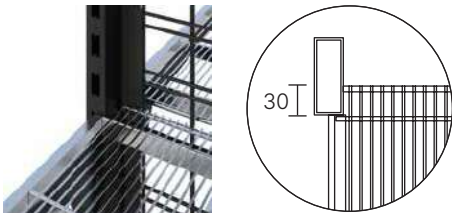
High base leg






6

5% more capacity per shelf with our wire shelf cutout design (mesh backpanels only)



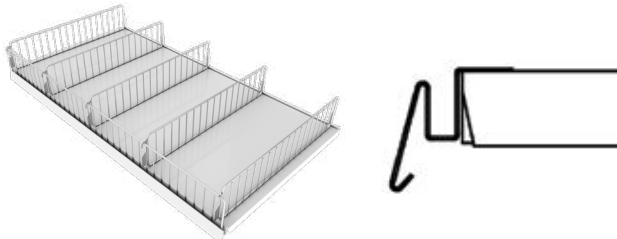
7

2-position shelf bracket



8

Versatile integrated shelf groove for attaching dividers and other shelf accessories

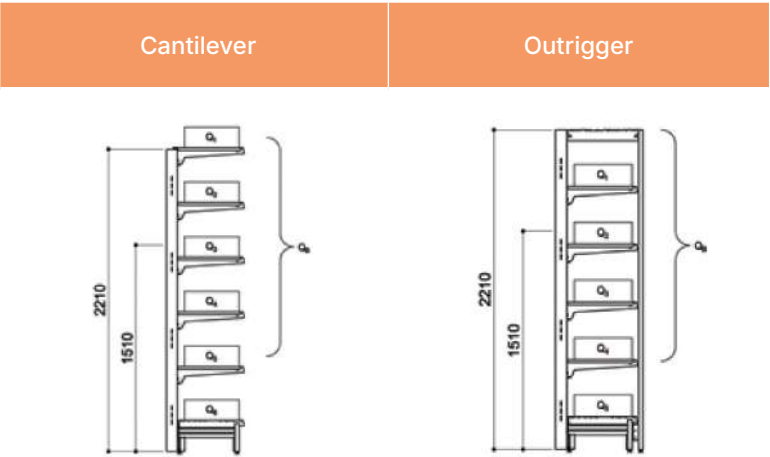


9

Heavy-duty Australian engineered shelving system



Outrigger Gondolas



Overall Bay Load Rating (Qmax)		914mm
Shelf Depth (mm)	Cantilever (kg)	Outrigger (kg)
300	400	1200
370	375	1200
470	325	1200
570	275	1200

Individual Shelf Load Rating		914mm
Shelf Depth (mm)	Cantilever Shelf Bracket (kg)	Outrigger Shelf Bracket (kg)
300	210	
370	210	350
470	250	350
570	150	300

Individual Shelf Load Rating		914mm
Base Shelf Depth (mm)		
300	225	
370	325	
470	335	
570	400	

The S-Mart Outrigger System provides the ultimate combination of display flexibility with storage capabilities. The heavy-duty overhead storage shelf allows you store overstock items without them getting lost out the back.

Weights & Capacities

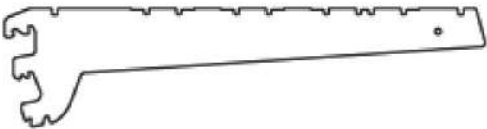
Overall Bay Load Rating (Qmax)

Maximum shelf loading consists of the sum of the base shelf weight plus total loading for all suspended shelves.
 $Q_{max} = (Q_1 + Q_2 + Q_3 + Q_4 + Q_5) + Q_6$

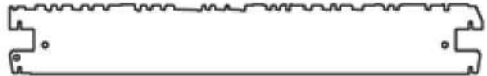
Individual shelf load should not exceed the individual shelf load rating as listed below.

Permissible load is calculated for shelving height of 2210mm.

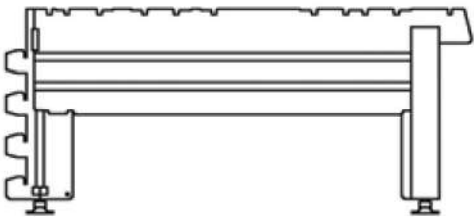
Cantilever Shelf Bracket 150kg



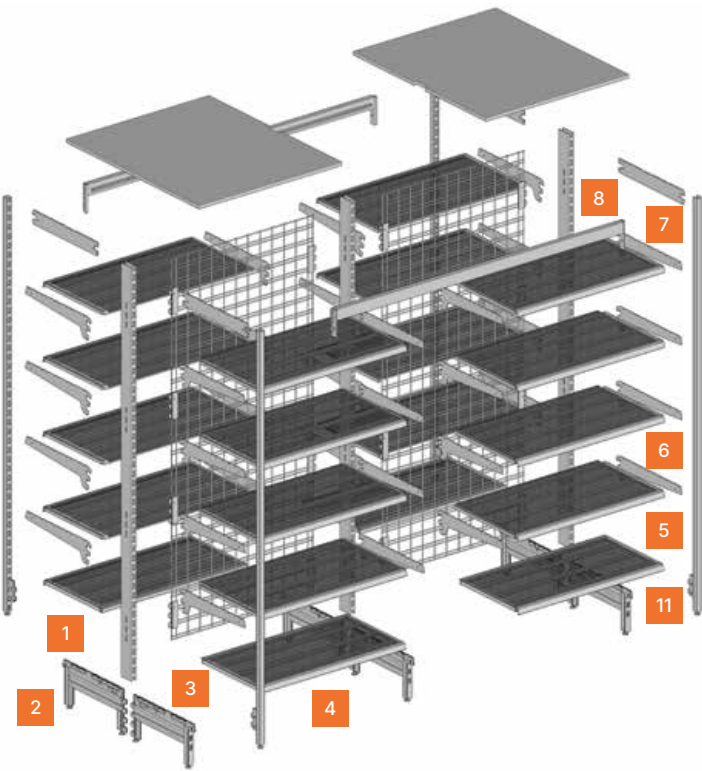
Cantilever Shelf Bracket 300kg



Base Shelf Depts 570mm

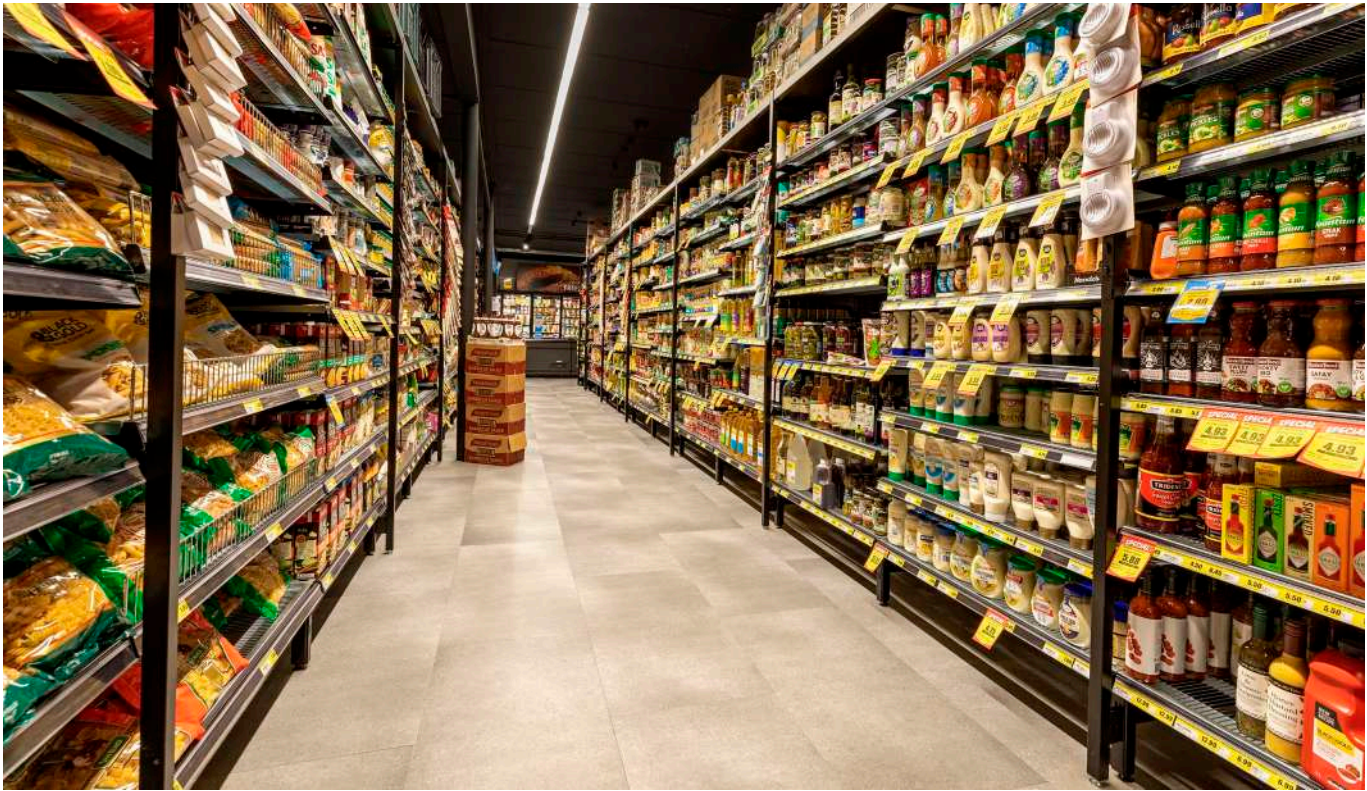
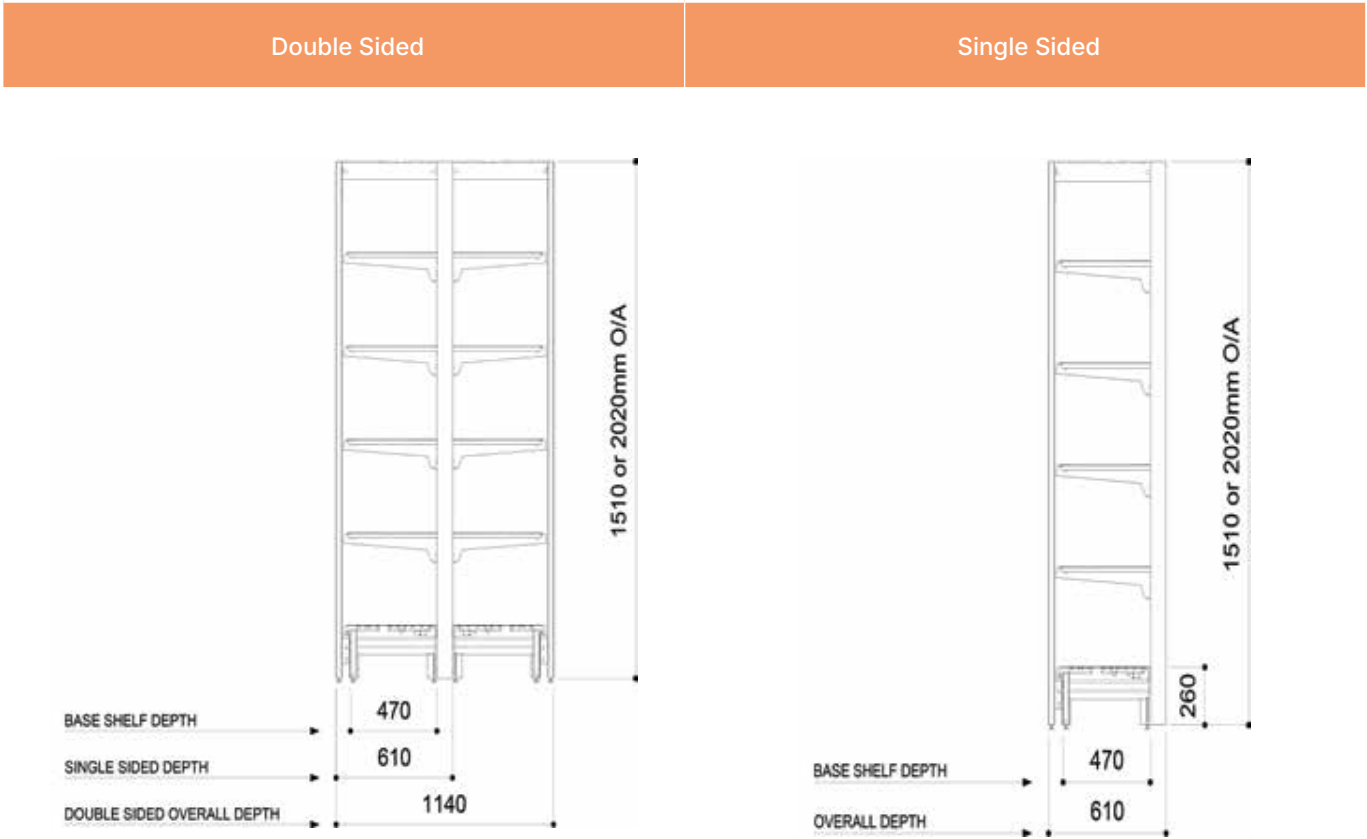


Outrigger Gondolas - Components



Item No.	Description	Part No.	Size	Comment
1	Centre Upright	AP40701	2210(H)x80(D)x30(W)	
2	Base Leg	AP40045MB	470(L)x260(H)x30(W)	
3	Mesh Backpanel	AP40710	886(W)x2004(H)	
4	Wire Base Shelf	AP40805	914(L)x470(D)	
5	Wire Shelf	AP40815	914(L)x470(D)	
6	Cantilever Shelf Bracket	AP40118MB	470(L)	
7	Outrigger Shelf Bracket	AP40175BK	470(L)	
8	Outrigger Front Beam	AP40950/18MBK	1830(L)x50(H)x30(D)	
	Outrigger Front Beam	AP40950/09MBK	1830(L)x50(H)x30(D)	For 914mm Outrigger Starter Bay
9	Outrigger Top Shelf	AP40706BK	1060(L)x886(W)x18(D)	
	Outrigger Top Shelf	AP40708BK	443(L)x886(W)x18(D)	For Single Sided Bay
10	Outrigger Front Post	AP40702	443(L)x886(W)x18(D)	
11	Front Post Fixing Bracket	AP40043		

Outrigger Gondolas - Footprints



Outrigger Gondolas - Configuration Examples



Double Sided Outrigger Bay with Densed Ends

Densed End Bay
Maximise product exposure with our range of Densed End Bays.

Double Sided Outrigger Bay 1830L
Heavy-duty Supermarket Shelving solution with top storage shelf.



Single Sided (Wall) Outrigger Bay with 914mm Starter Bay

Single Sided Outrigger Starter Bay 1830mm or 914mm Long
Use single 914mm bay where required for space restricted areas.

Single Sided Outrigger Add-On Bay 1830L
Matching 1830L Outrigger Bay in single side configuration for walls.

Supermarket Bays - Outrigger - Mesh Backpanels



Single Sided Bay 1830L - Mesh Backpanels 2200H

- High capacity Single-sided shelving bay for walls, with overhead storage shelf for overstock items
- 1830mm bay is made up of 2 × 914mm sections
- Matt black powdercoated frame
- Single-piece mesh backpanel
- Bay includes Base + 4 x wire shelves per bay + overhead shelf
- Purchase additional wire shelves seperately

Part No.	Height	Width	Base Shelf Depth	Footprint	Bay Type
AP90038MESH/370MB	2200	1830	370	505	Starter
AP90039MESH/370MB	2200	1830	370	505	Add-On
AP90038MESH/470MB	2200	1830	470	605	Starter
AP90039MESH/470MB	2200	1830	470	605	Add-On

Single Sided Bay 914L - Mesh Backpanels 2200H

- High capacity Single-sided shelving bay for walls, with overhead storage shelf for overstock items.
- Use as a Starter Bay for 1830mm Outrigger Bay where space is restricted
- Matt black powdercoated frame
- Single-piece mesh backpanel
- Bay includes Base + 4 x wire shelves per bay + overhead shelf
- Purchase additional wire shelves seperately

Part No.	Height	Width	Base Shelf Depth	Footprint	Bay Type
AP90066MESH/370MB	2200	914	370	904	Starter
AP90066MESH/470MB	2200	914	470	1104	Starter

Supermarket Bays - Outrigger - Mesh Backpanels



Double Sided Bay 1830L - Mesh Backpanels 2200H

- High capacity Supermarket Shelving bay for aisles, with overhead storage shelf for overstock items
- 1830mm bay is made up of 2 × 914mm sections
- Matt black powdercoated frame
- Single-piece mesh backpanel
- Bay includes Base + 4 x wire shelves per bay + overhead shelf
- Purchase additional wire shelves seperately

Part No.	Height	Width	Base Shelf Depth	Footprint	Bay Type
AP90068MESH/370MB	2200	1830	370	935	Starter
AP90069MESH/370MB	2200	1830	370	935	Add-On
AP90068MESH/470MB	2200	1830	470	1830	Starter
AP90069MESH/470MB	2200	1830	470	1830	Add-On

Double Sided Bay 914L - Mesh Backpanels 2200H

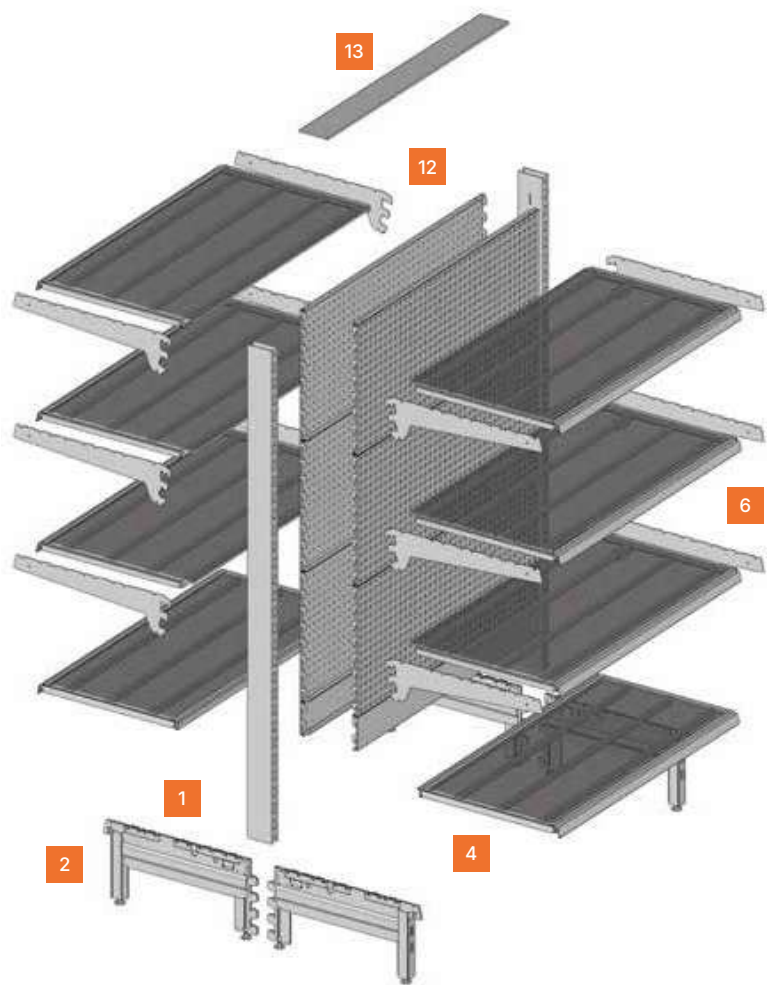
- High capacity Supermarket Shelving bay for aisles, with overhead storage shelf for overstock items
- 914mm bay is used to fill in small spaces
- Matt black powdercoated frame
- Single-piece mesh backpanel
- Bay includes Base + 4 x wire shelves per bay + overhead shelf
- Purchase additional wire shelves seperately

Part No.	Height	Width	Base Shelf Depth	Footprint	Bay Type
AP90066MESH/370MB	2200	914	370	904	Starter
AP90066MESH/470MB	2200	914	470	1104	Starter

Cantilever Gondolas - Components

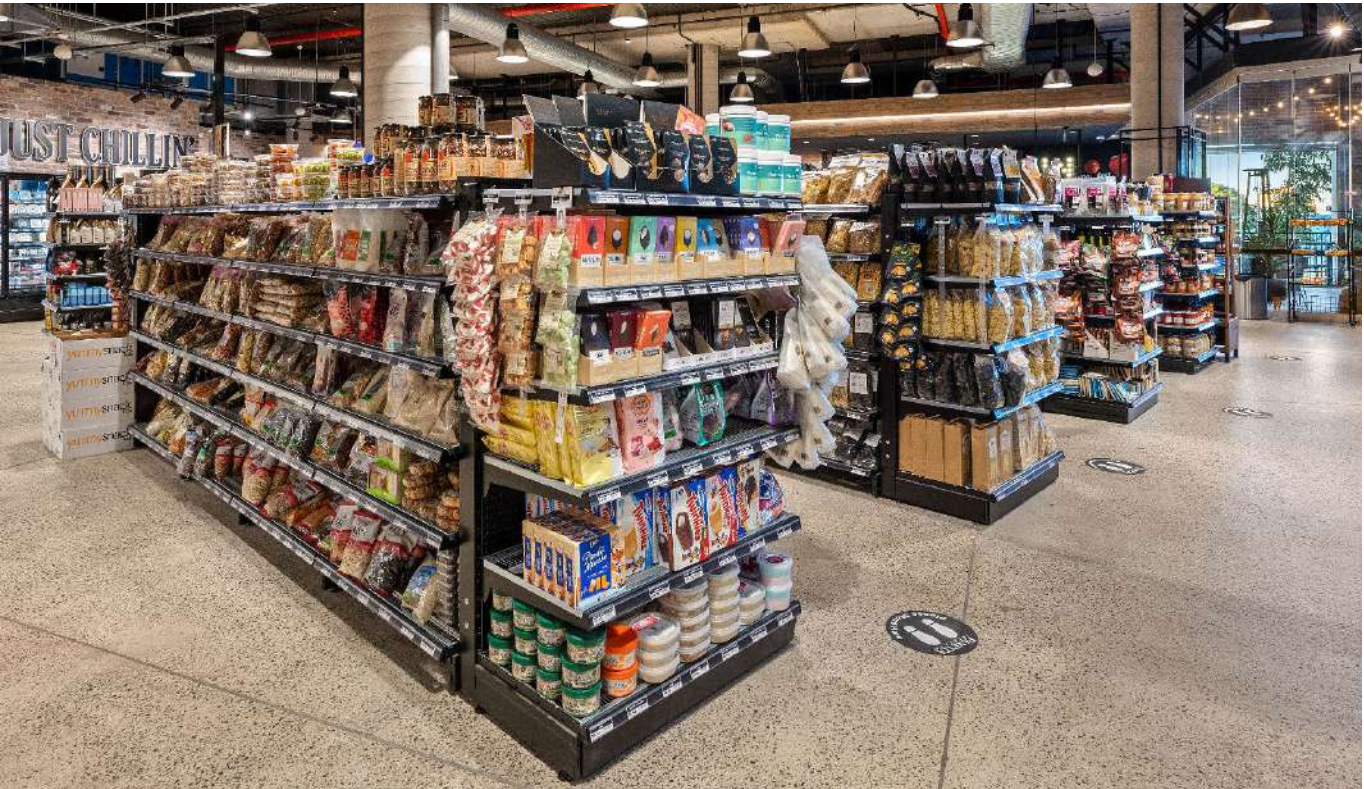
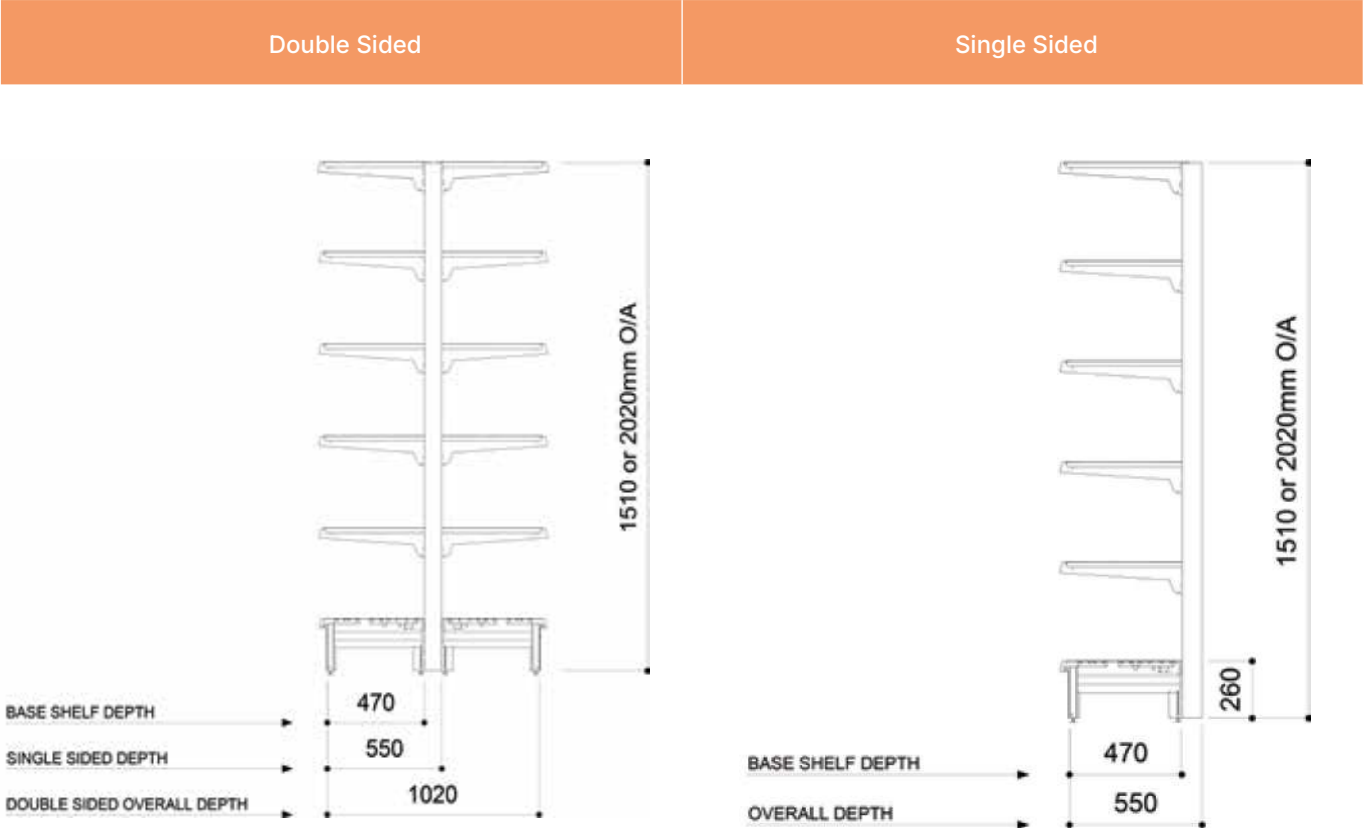
The S-Mart Cantilever System gives you all the display flexibility without the imposing overhead shelf that restricts vision throughout the store.

It can be put together in so many combinations, making it ideal for all low to medium height supermarket and convenience applications.



Item No.	Description	Part No.	Size	Comment
1	Centre Upright	AP40701	2210(H)x80(D)x30(W)	
2	Base Leg	AP40045MB	470(L)x260(H)x30(W)	
4	Wire Shelf	AP40805	914(L)x470(D)	Use for both Base and Upper shelf levels
6	Cantilever Shelf Bracket	AP40118MB	470(L)	
12	Volcano Backpanel	AP40764MB	914(L)x400(H)	
13	Gondola Top Cover	AP40753MB	914(L)x80(W)	

Cantilever Gondolas - Footprints



Cantilever Gondolas - Configuration Examples

Starter Bay

Add-On Bay



Single Sided (Wall) Cantilever Bay with Mesh or Volcano Backpanels

Cantilever Wall Bays are available with either mesh or Volcano Punched Backpanels. Single sided bays are available in 2210mm or 1510mm bay heights. See page 22 (Mesh Backpanels) and 25 (Volcano Punched Backpanels).

Starter (End) Bay

Starter Bay

Add-On Bay



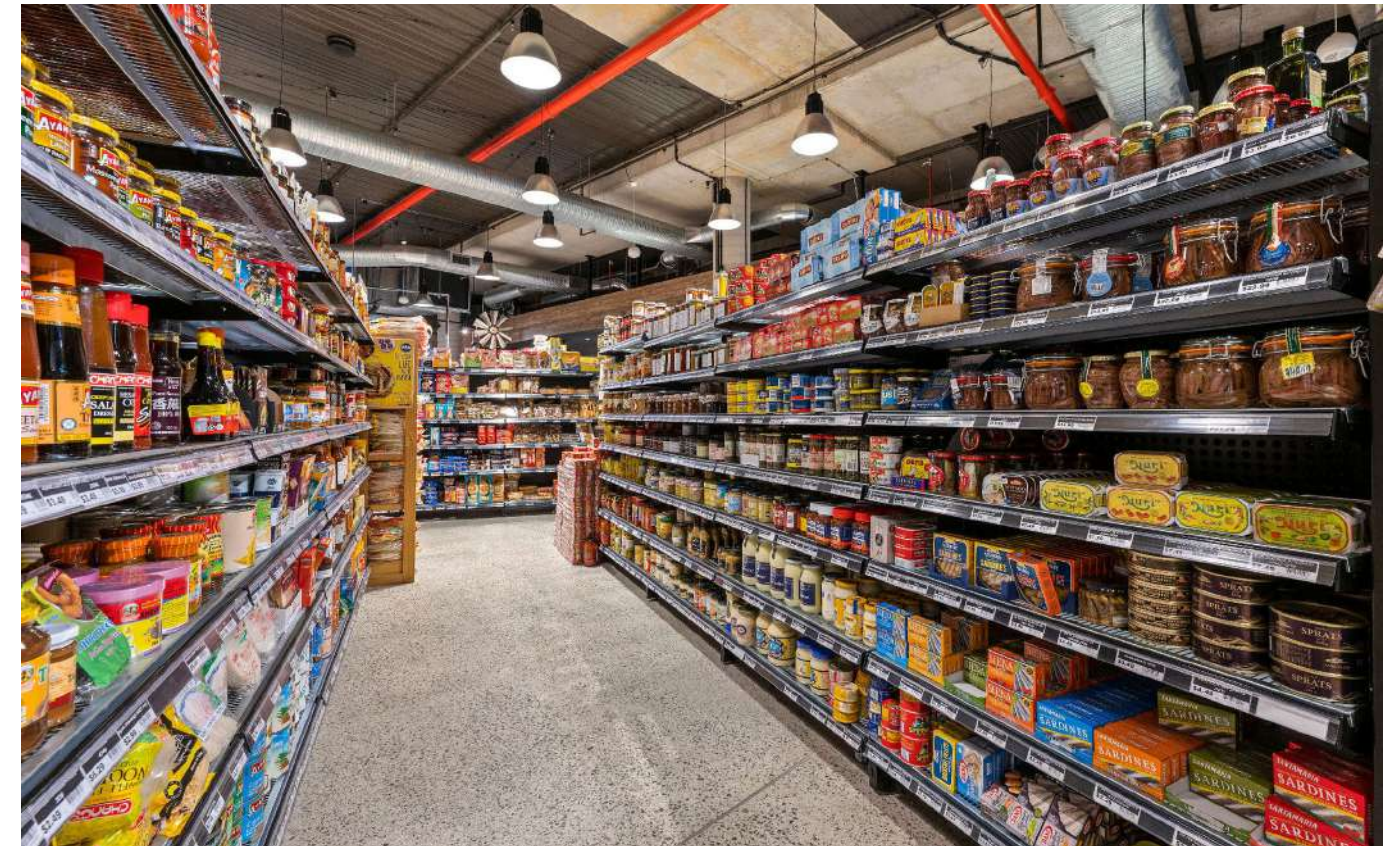
Double Sided Low Height Cantilever Bay with End Bay

Double side Cantilever gondola bays in low-height (1510mm) configuration. Single side starter bay can be used in an 'End Bay' configuration.

Available with either mesh or Volcano Punched backpanels, and 1510mm or 2210mm bay heights.

See pages 22-25.

Cantilever Gondolas



Supermarket Bays - Cantilever - Mesh Backpanels

Single Sided Bay 914mm - Mesh Backpanels 1500H

- Low height shelving bay with mesh backpanel
- Matt black powdercoated frame
- Includes base shelf. Purchase additional shelves seperately



Part No.	Height	Width	Base Shelf Depth	Footprint	Bay Type
AP90015MESH/300MB	1500	914	300*	380	Starter
AP90016MESH/300MB	1500	914	300*	380	Add-On
AP90015MESH/370MB	1500	914	370	450	Starter
AP90016MESH/370MB	1500	914	370	450	Add-On
AP90015MESH/470MB	1500	914	470	550	Starter
AP90016MESH/470MB	1500	914	470	550	Add-On

Supplied with 260mm High Base Legs (pictured). You may also select 160mm high Standard Base Legs (refer page 154)

* 300mm Base Legs only available as 160mm high Standard Base Legs.

Single Sided Bay 914mm - Mesh Backpanels 2200H

- Full height shelving bay with mesh backpanel.
- Matt black powdercoated frame.
- Includes base shelf. Purchase additional shelves seperately



Part No.	Height	Width	Base Shelf Depth	Footprint	Bay Type
AP90060MESH/300MB	2200	914	370	450	Starter
AP90061MESH300MB	2200	914	370	450	Add-On
AP90060MESH/370MB	2200	914	470	550	Starter
AP90061MESH/370MB	2200	914	470	550	Add-On

Supplied with 260mm High Base Legs (pictured). You may also select 160mm high Standard Base Legs (refer page 154)

NB: It is not recommended to use a 300mm deep base with a full height bay.

Supermarket Bays - Cantilever - Mesh Backpanels

Double Sided Bay 914mm - Mesh Backpanels 1500H

- Low height gondola shelving bay with mesh backpanel
- Matt black powdercoated frame
- Includes 2 x base shelves. Purchase additional shelves seperately



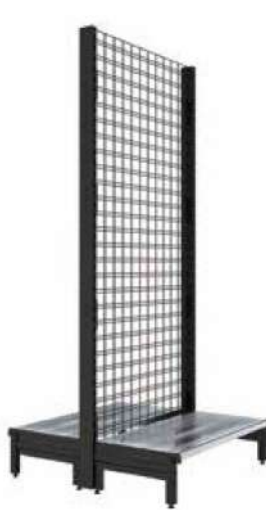
Part No.	Height	Width	Base Shelf Depth	Footprint	Bay Type
AP90045MESH/300MB	1500	914	300*	680	Starter
AP90046MESH/300MB	1500	914	300*	680	Add-On
AP90045MESH/370MB	1500	914	370	820	Starter
AP90046MESH/370MB	1500	914	370	820	Add-On
AP90045MESH/470MB	1500	914	470	1020	Starter
AP90046MESH/470MB	1500	914	470	1020	Add-On

Supplied with 260mm High Base Legs (pictured). You may also select 160mm high Standard Base Legs (refer page 154)

* 300mm Base Legs only available as 160mm high Standard Base Legs.

Double Sided Bay 914mm - Mesh Backpanels 2200H

- Full height gondola shelving bay with mesh backpanel
- Matt black powdercoated frame
- Includes 2 x base shelves. Purchase additional shelves seperately



Part No.	Height	Width	Base Shelf Depth	Footprint	Bay Type
AP90030MESH/370MB	2200	914	370	820	Starter
AP90031MESH/370MB	2200	914	370	820	Add-On
AP90030MESH/470MB	2200	914	470	1020	Starter
AP90031MESH/470MB	2200	914	470	1020	Add-On

Supplied with 260mm High Base Legs (pictured). You may also select 160mm high Standard Base Legs (refer page 154)

NB: It is not recommended to use a 300mm deep base with a full height bay.

Supermarket Bays - Cantilever - Volcano Backpanels

Single Sided Bay 914mm - Volcano Backpanels 1500H

- Low height shelving bay with mesh backpanel
- Matt black powdercoated frame
- Includes base shelf. Purchase additional shelves seperately



Part No.	Height	Width	Base Shelf Depth	Footprint	Bay Type
AP90015VOL/300MB	1500	914	300*	380	Starter
AP90016VOL/300MB	1500	914	300*	380	Add-On
AP90015VOL/370MB	1500	914	370	450	Starter
AP90016VOL/370MB	1500	914	370	450	Add-On
AP90015VOL/470MB	1500	914	470	550	Starter
AP90016VOL/470MB	1500	914	470	550	Add-On

Supplied with 260mm High Base Legs (pictured). You may also select 160mm high Standard Base Legs (refer page 154)

* 300mm Base Legs only available as 160mm high Standard Base Legs.

Single Sided Bay 914mm - Volcano Backpanels 2200H

- Full height shelving bay with mesh backpanel
- Matt black powdercoated frame.
- Includes base shelf. Purchase additional shelves seperately



Part No.	Height	Width	Base Shelf Depth	Footprint	Bay Type
AP90030VOL/370MB	2200	914	370	450	Starter
AP90031VOL/370MB	2200	914	370	450	Add-On
AP90030VOL/470MB	2200	914	470	550	Starter
AP90031VOL/470MB	2200	914	470	550	Add-On

Supplied with 260mm High Base Legs (pictured). You may also select 160mm high Standard Base Legs (refer page 154)

NB: It is not recommended to use a 300mm deep base with a full height bay.

Supermarket Bays - Cantilever - Volcano Backpanels

Double Sided Bay 914mm - Volcano Backpanels 1500H

- Low height gondola shelving bay with mesh backpanel
- Matt black powdercoated frame
- Includes 2 x base shelves. Purchase additional shelves seperately



Part No.	Height	Width	Base Shelf Depth	Footprint	Bay Type
AP90045VOL/300MB	1500	914	300*	680	Starter
AP90046VOL/300MB	1500	914	300*	680	Add-On
AP90045VOL/370MB	1500	914	370	820	Starter
AP90046VOL/370MB	1500	914	370	820	Add-On
AP90045VOL/470MB	1500	914	470	1020	Starter
AP90046VOL/470MB	1500	914	470	1020	Add-On

Supplied with 260mm High Base Legs (pictured). You may also select 160mm high Standard Base Legs (refer page 154)

* 300mm Base Legs only available as 160mm high Standard Base Legs.

Double Sided Bay 914mm - Volcano Backpanels 2200H

- Full height gondola shelving bay with mesh backpanel
- Matt black powdercoated frame
- Includes 2 x base shelves. Purchase additional shelves seperately



Part No.	Height	Width	Base Shelf Depth	Footprint	Bay Type
AP90030VOL/370MB	2200	914	370	820	Starter
AP90031VOL/370MB	2200	914	370	820	Add-On
AP90030VOL/470MB	2200	914	470	1020	Starter
AP90031VOL/470MB	2200	914	470	1020	Add-On

Supplied with 260mm High Base Legs (pictured). You may also select 160mm high Standard Base Legs (refer page 154)

NB: It is not recommended to use a 300mm deep base with a full height bay.

Dense End Bays

Invest in premium real estate at the end of your gondola bays, with various merchandising solutions. Use for high-volume promotions as you guide customer

through your store. Our End Bays combine heavy-duty, volume stocking, and cross-merchandising capabilities.



- Our Dense End Bays provide a vehicle for some terrific marketing opportunities together with a high-capacity are for promotional merchandise with cross-merchandising possibilities.
- You can select from our functional standard designs or incorporate some customization to provide a unique aesthetic according to your design requirements.
- Take advantage of selling opportunities while guiding your customers through the store.
- The Dense End Bays can be merchandised with horizontal or sloping shelves or with merchandising hooks for hangsell display.

Dense End Bays



Plain Densed End

- Simply assembled from standard components, the Plain Dense End provides all the shelving capacity together with merchandising capacity on the ends

Incorporating the following components:

- 2 off - 80 × 30mm slotted uprights*
- 2 off - 30 × 30mm slotted front posts*
- 2 off - 260mm high base legs
- 5 off - Wire shelves with shelf bracket*
- 1 off - Mesh back panel
- 10 off - Wire side shelves*
- 2 off - Mesh side panels

Height	Width	Base Shelf Depth	Footprint
2200	945*	470	600

* Dense End width dimension does not include Wire Side Wing Shelves.

* Please refer to "Components" section of catalogue to order additional shelves, Wire Side Wing Shelves & merchandising hooks.

Dense End Bays

Densed End with Overhead Canopy

- Using all of the same basic components, you can upgrade your Dense End with our convenient and economical Overhead Canopy and/or Curved Base Shelf.

Incorporating the following components:

- 5 off - Wire Shelves with shelf brackets*
- 2 off - 30 × 30mm slotted front posts

- 2 off - 80 × 30mm slotted uprights*
- 1 off - Mesh back panel
- 2 off - Mesh side panels
- 2 off - 260mm High Base Legs
- 10 off - Wire Side Shelves
- 1 off - Curved Overhead Canopy
- 1 off - Curved Laminated Base Shelf (AP407?? only)



Densed End with Overhead Canopy			
Height	Width	Base Shelf Depth	Footprint
2600	945*	470	600

* Dense End width dimension does not include Wire Side Wing Shelves.

* Please refer to “Components” section of catalogue to order additional shelves, Wire Side Wing Shelves & merchandising hooks.

Densed End with Overhead Canopy & Base Shelf			
Height	Width	Base Shelf Depth	Footprint
2600	1200	470	800

Dense End Bays



Mobile Power End Bay

- Provides convenience for high profile front-of-store promotions using our standard S-Mart shelves
- Designed and built for ease of merchandising and customer access
- Compact design with maximum merchandising impact
- Fully adjustable shelves with acrylic shelf fronts to support stock
- Fully mobile on heavy duty castors allow for easy relocation
- Rear storage for excess stock
- Give your power end more power with customised side panels to reinforce your store branding

Height	Width	Base Shelf Depth	Footprint
2500	1050	370	850

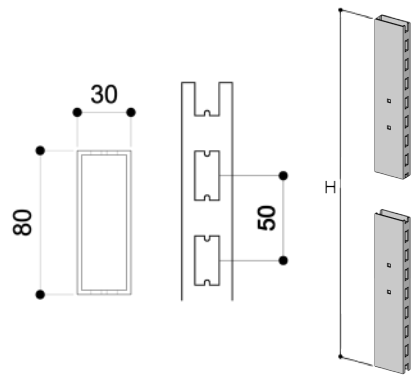


Flat End Bay

- The Flat End bay provides additional merchandising potential in tight spaces
- Compact design fixes directly to the end of a gondola run
- Can be used with peg hooks for hangsell or with standard metal or shelves
- Other panel widths are available from 600mm to 1200mm

Part No.	Height	Width
AP	1500	914
AP	1800	914
AP	2200	914

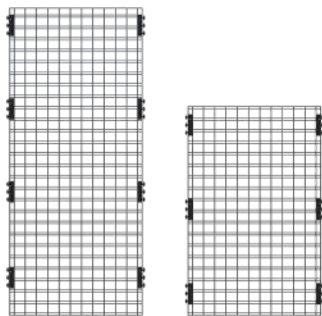
Components



1. Centre Upright				
Part No.	Height	Width	Depth	Colour
AP40701/15	1610	914	30	Matt Black
AP40701	2210	914	30	Matt Black



2. Base Leg			
Part No.	Height	Width	Colour
AP40045MB	470	260	Matt Black

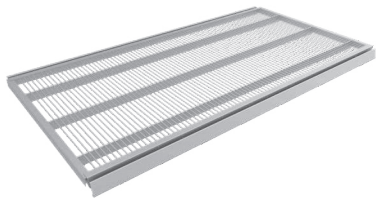


3. Mesh Backpanel			
Part No.	Height	Width	Colour
AP40742	1400	886	Matt Black
AP40740	2004	886	Matt Black

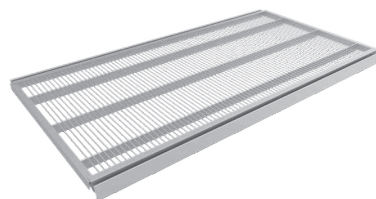


3. Mesh Side Panel for End Bay			
Part No.	Height	Width	Colour
AP40711	2004	552	Matt Black

Components



4. Wire Base Shelf			
Part No.	Height	Width	Colour
AP40805	914	470	Bright Zinc



5. Wire Shelf			
Part No.	Height	Width	Colour
AP40815	914	470	Bright Zinc



6. Cantilever Shelf Racket		
Part No.	Length	Colour
AP40118MB	470	Matt Black



7. Outrigger Shelf Racket		
Part No.	Length	Colour
AP40175MB	914	Matt Black



8. Outrigger Front Beam				
Part No.	Length	Height	Colour	Comment
AP40950/09MBK	914	50	Matt Black	For 914mm Outrigger Starter Bay
AP40950/18MBK	1830	50	Matt Black	For 1830mm Outrigger Bay

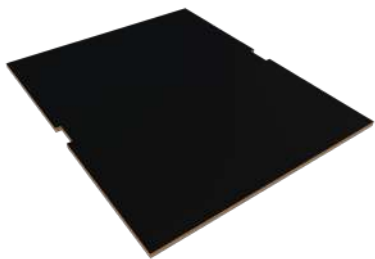
Components



- Top shelf for Outrigger Wall Bay (Single Sided)
- Black MDF 18mm Material
- Two required per 1830mm Outrigger Bay

9. Outrigger Top Shelf - Wall Bay

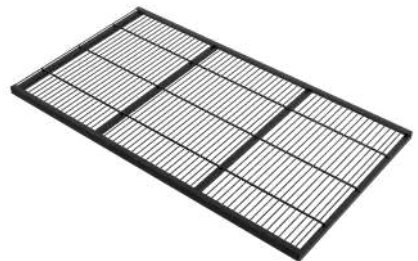
Part No.	Depth	Length	Colour
AP40706BK	443	886	Matt Black



- Top shelf for Double Sided Outrigger Bay
- Black MDF 18mm Material
- Two required per 1830mm Outrigger Bay

9. Outrigger Top Shelf - Double Sided Bay

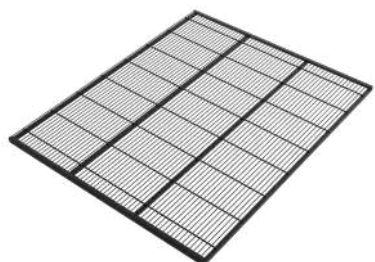
Part No.	Depth	Length	Colour
AP40708BK	1060	886	Matt Black



- Wire top shelf for Outrigger Wall Bay (single sided)
- Heavy-duty wire construction (Matt Black finish)
- 2 required per 1830mm Outrigger Bay

9. Wire Outrigger Top Shelf - Wall Bay

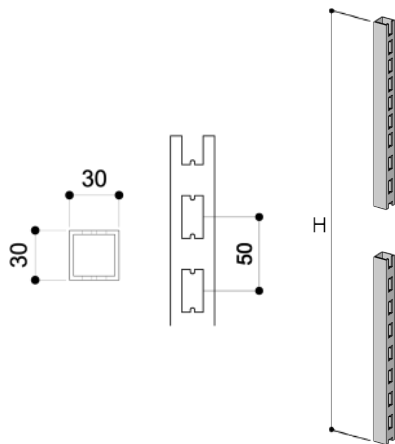
Part No.	Depth	Length	Colour
AP40703MB	490	895	Matt Black



- Wire top shelf for Double Sided Outrigger Bay
- Heavy-duty wire construction (Matt Black finish)
- 2 required per 1830mm Outrigger Bay

9. Wire Outrigger Top Shelf - Double Sided Bay

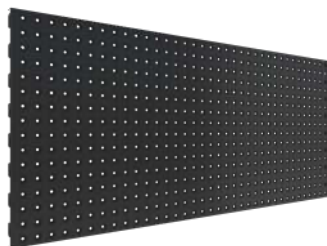
Part No.	Depth	Length	Colour
AP40709MB	875	1072	Matt Black



- Front Outrigger Support Post
- Use with Front Post Fixing Bracketv(AP40043) to attach to Base
- Leg and Outrigger Shelf Bracket (AP40175) to attach at upper level

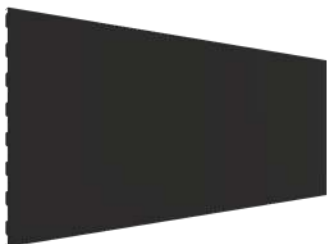
10. Outrigger Front Post

Part No.	Height	Width	Depth	Colour
AP40702	443	30	30	Matt Black



12. Volcano Punched Backpanel

Part No.	Length	Height	Colour
AP40764MB	914	470	Matt Black



Plain Backpanel

Part No.	Length	Height	Colour
AP40731MB	914	100	Matt Black
AP40732MB	914	200	Matt Black
AP40733MB	914	300	Matt Black
AP40734MB	914	400	Matt Black



13. Gondola Top Cover

Part No.	Length	Width	Colour
AP40753MB	914	80	Matt Black

Components

Convenience Store Equipment - Installations



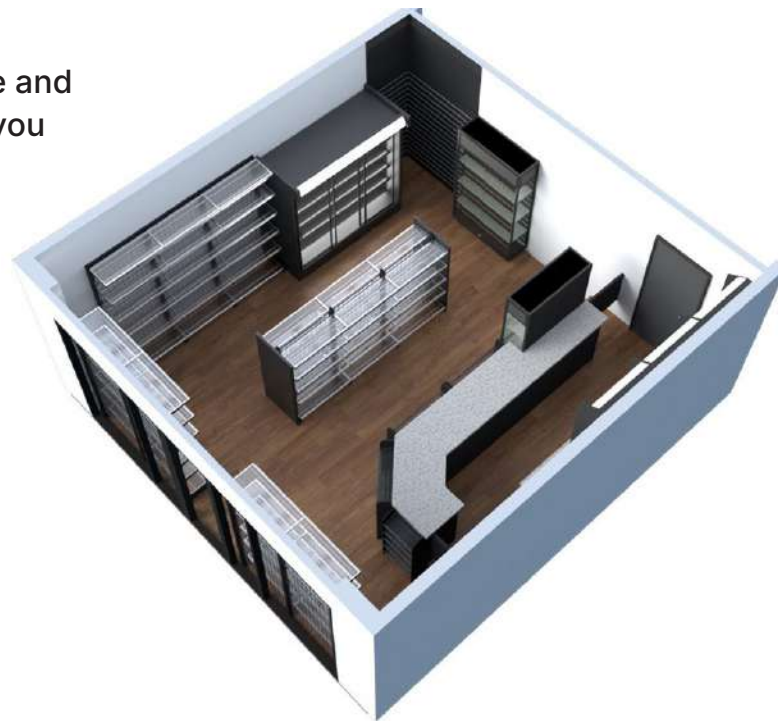
Convenience Store Equipment - Installations



Convenience Store Equipment - Installations

With the range of convenience store and supermarket equipment from ADP, you can select from the complete retail fitout requirements from shelving to counters and showcases.

- Gondola & wall shelving
- Counters
- Front display shelving
- Showcases
- Rear storage cabinetry
- Cigarette storage unit
- Coolroom storage shelving
- Convenience POD
- Forecourt secure display unit



Isometric - 1



Isometric - 2



Isometric - 3

Convenience Store Equipment - Convenience Pod



- The CONVENIENCE POD by ADP provides a convenient solution for the store, service station or even a larger office to provide a basic food & hot drink option.
- This fully self-contained unit includes pre-wired electrical connection. All you need is to supply the power feed-in cable to connect to the power panel.
- Includes refrigerated self-service display unit, warming self-service display unit, automatic coffee and hot drink dispenser, microwave oven for rapid heating together with condiment and cup dispensers. See a full list of equipment on next page.
- Increase your sales to "grab'n'go" client or energize your employees with this aesthetically pleasing unit that can be customized to your decor selections.

Contact Us

1800 642 366

www.adpstore.com.au

sales@adpstore.com.au

Sydney

Level 6, 10 Herb Elliot Ave
Sydney Olympic Park, NSW 2127

☎ 1800 642 366

Perth

33 Tamara Drive
Cockburn Central, WA 6164

☎ 1800 642 366

Adelaide

255 Richmond Road
Richmond, SA 5033

☎ 08 7079 2025

Brisbane

Level 4, 97 Boundary Street
West End, QLD 410

☎ 1800 642 366

Melbourne

Unit 4, 2 Thomsons Road
Keilor Park, VIC 3042

☎ 1800 642 366

Auckland

40 Onehunga Mall
Onehunga, Auckland 1061

☎ +64 9 950 8720