

Liquor



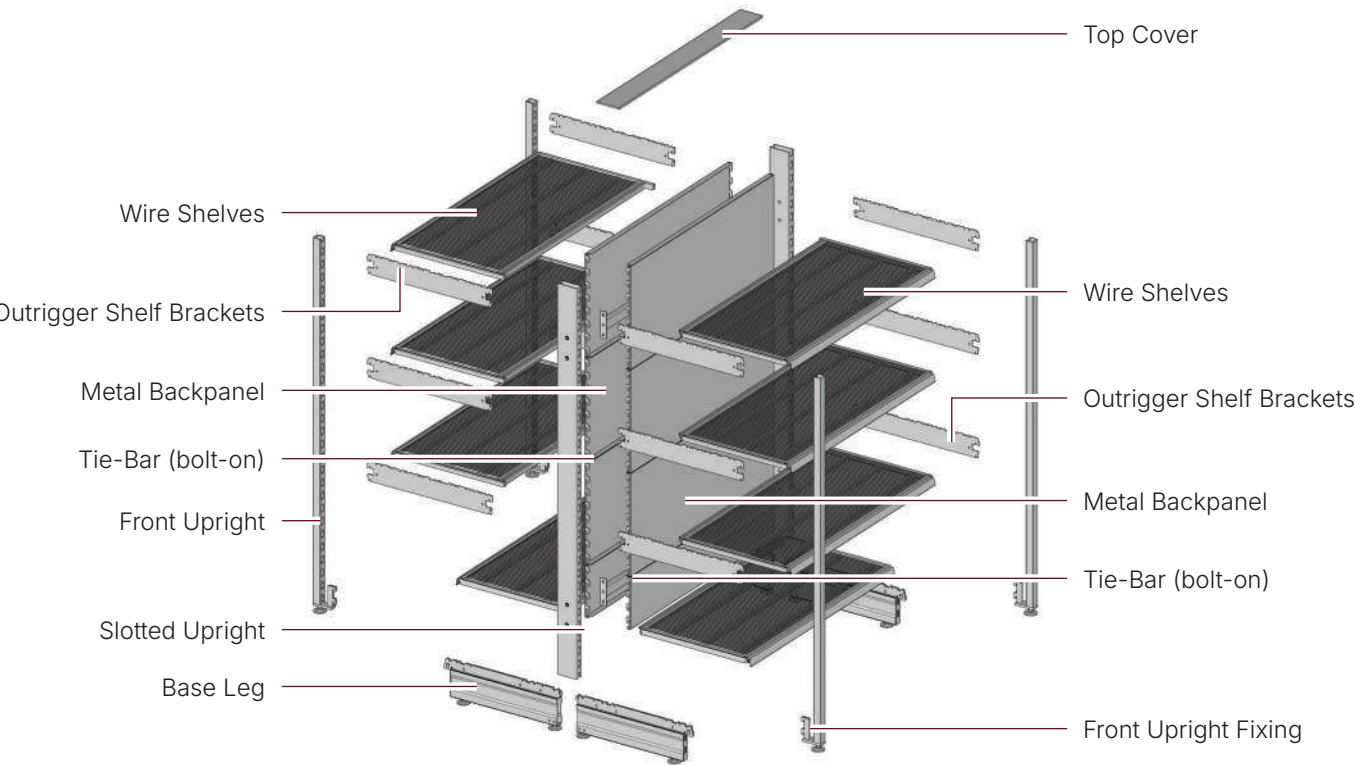
Introduction

Choosing the right shelving is the first step in any successful Liquor Store project. ADP's Liquor Outrigger Shelving is available in Gondola (Floor), Wall Shelving and End Bay configurations.

ADP S-Mart Liquor Outrigger Shelving is a proven, heavy-duty shelving system designed specifically for Liquor Stores. It offers the perfect combination of style and strength, and is sure to set your Liquor store apart

Available in 470mm (6 bottle) or 570mm (7 bottle) shelf depths, Liquor Outrigger Shelving has the flexibility to adapt to any store layout. It's unique modular design allows maximum adjustment of shelves and configuration to either single or double-sided shelving bays using the same components.

It is the only Liquor Shelving that provides unique 'back-panels' behind the shelves. These back-panels help to prevent bottles falling between the shelves, and are another design feature that gives Liquor Outrigger Shelving it's attractive appearance.



Benefits

- Upmarket, modern design to enhance store presentation
- Proven, heavy-duty shelving system designed specifically for Liquor Stores
- Flexible, modular construction to adapt to any store layout
- Full height back-panels to retain bottles
- Angled shelf lip suitable for clip-on data strip
- Integrated category signage solution
- 5-year warranty
- In stock



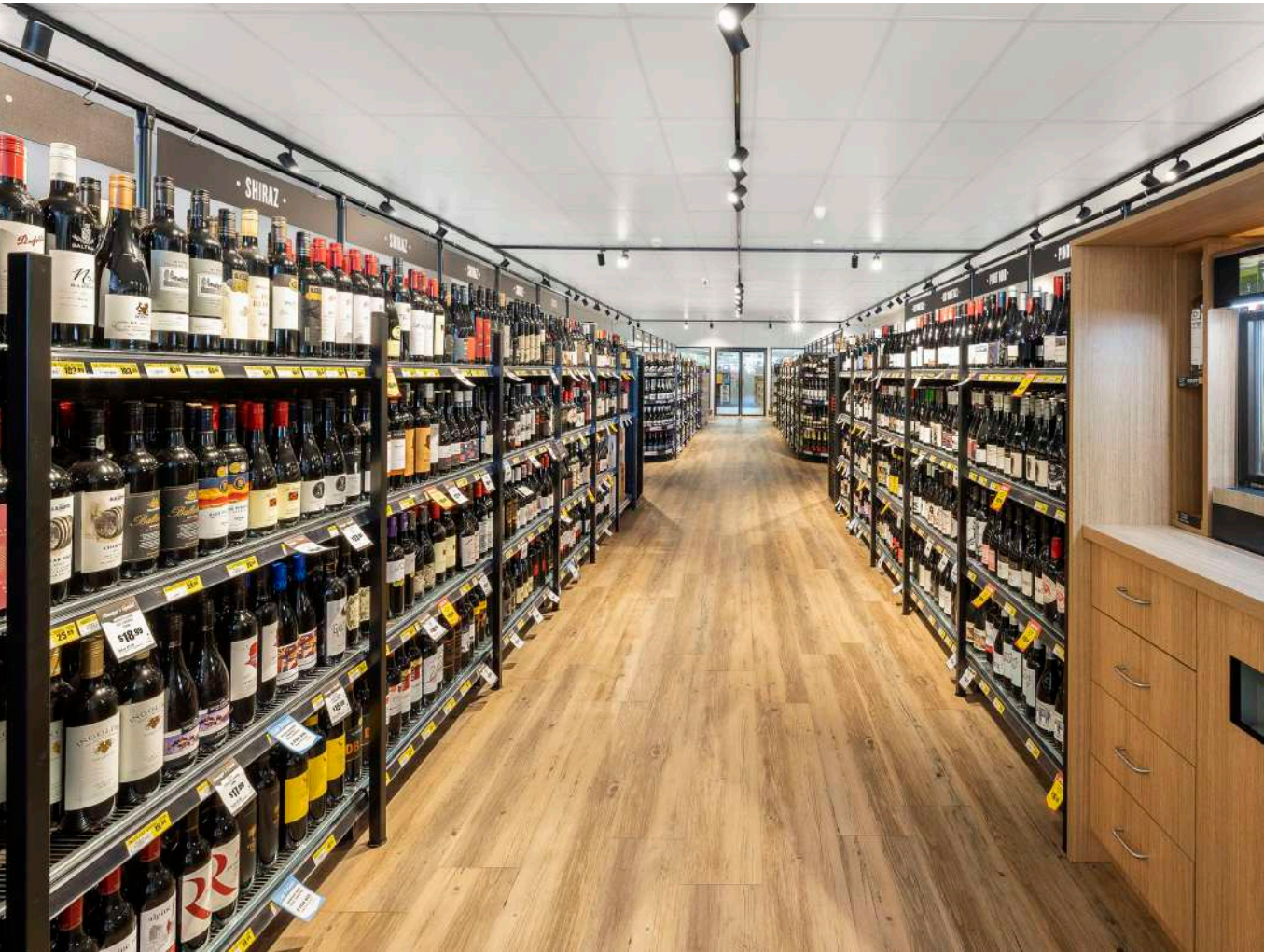
Gondola Shelving - Bay



Gondola Bay

- 8 x shelves per bay (base + 3)

Double Slided Bay - Plain Backpanels				1500H	
Part No.	Height	Width	Base Shelf Depth	Footprint	Bay Type
AP9815PL/470MB	1500	914	470	1120	Starter
AP9816PL/470MB	1500	914	470	1120	Add-On
AP9815PL/570MB	1500	914	570	1320	Starter
AP9816PL/570MB	1500	914	570	1320	Add-On



Gondola Shelving - End Bays



Outrigger Gondola End Bays

- Includes front uprights for additional weight loading
- Finish: Black panels and uprights with zinc wire shelves
- Includes clip on data strip with gripper strip for each shelf

Part No.	Bay Length	Bay Height	No. of Shelves	Shelf Depth
AP9770/470	1000	1500	4	470
AP9770/570	1000	1500	4	570
AP9715/570	1250	1500	4	470
AP9716/570	1250	1500	4	570



Gondola Shelving - Melamine End Panels

- Melamine end panels provide the dual decorative & functional purpose by closing off ends of wall bays or gondola runs while retaining bottles safely
- Standard colour -BLACK melamine. Also available in a wide range of decorative finishes to support your store design requirements
- End panels are attached to the shelving system by means of an ingenious clip system, requiring no drilling into the metal frame
- Gondola end panels with radius front corners are available as an option. Please enquire

Part No.	Dimensions	Shelf Depth
Suit 1500mm High Gondola Bays		
AP9785/470	600 ×1530 (H)	470
AP9785/570	700 × 1530 (H)	570



Gondola Shelving - Cantilever Shelving Bays

Gondola Bay

- Cantilever
- Finish: Plain Black panels and uprights with zinc wire shelves
- Includes clip on data strip with gripper strip for each shelf
- Bays include base shelf and 3 upper shelves per side



Double Sided Bay - Plain Backpanels				1500H	
Part No.	Height	Width	Base Shelf Depth	Footprint	Bay Type
AP9861PL/470MB	1500	914	470	1020	Starter
AP9866PL/470MB	1500	914	470	1020	Add-On
AP9861PL/570MB	1500	914	570	1220	Starter
AP9866PL/570MB	1500	914	570	1220	Add-On

End Bay

- Cantilever
- Finish: Plain Black panels and uprights with zinc wire shelves
- Includes clip on data strip with gripper strip for each shelf
- Bays include base shelf and 3 upper shelves per side



End Bay - Plain Backpanels				1500H	
Part No.	Height	Width	Base Shelf Depth	Footprint	Bay Type
AP9763PL/470MB	1500	914	470	550	
AP9763PL/570MB	1500	914	570	550	
AP9764PL/470MB	1500	1250	470	650	
AP9764PL/570MB	1500	1250	570	650	

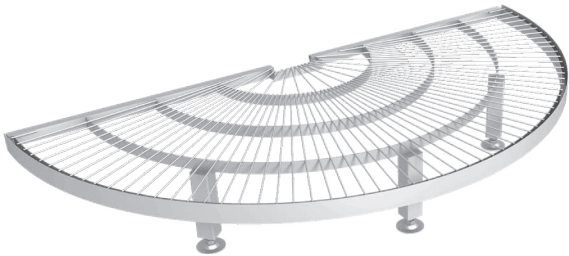
Gondola Shelving - Gondola Curved End Shelves

Gondola Curved End Shelves

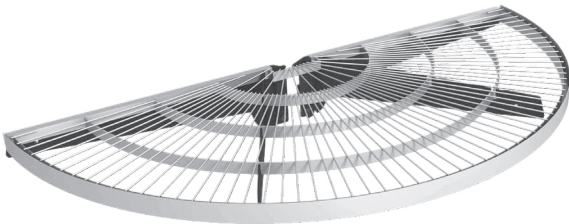
- Now you can make a grand statement with the Radius Wire Shelves. Designed to fit perfectly onto the end of a Cantilever or Outrigger gondola, they provide scope for some stunning merchandising effects
- Can be used in-line with the gondola shelves or at different heights to provide another alternative display
- Can be retro-fitted onto other brand gondolas or onto the S-Mart Long Span shelving by adding an additional gondola upright
- Use different radius shelves to provide a “pyramid” effect on your gondola ends
- Radius wire shelves assist with traffic flow and customer navigation through your store



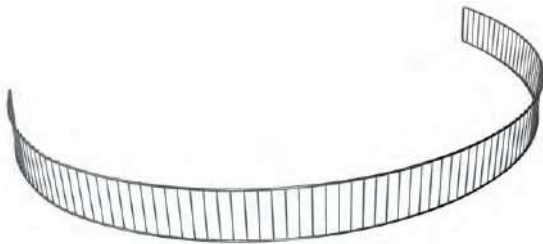
Gondola Shelving - Gondola Curved End Shelves



Base Shelf (with base feet)



Upper Shelf (with shelf brackets)



Curved Wire Shelf Front

Part No.	Component	To Suit Shelf Depth
Curved Base Shelf (with base leg to attach to gondola end)		
AP40895/Base	Curved base shelf with base feet	470mm
AP40896/Base	Curved base shelf with base feet	570mm
Curved Upper Shelf (with adjustable brackets for mounting to gondola posts)		
AP40895	Curved upper shelf with brackets	470mm
AP40896	Curved upper shelf with brackets	570mm
AP40893	Curved upper shelf with brackets	300mm
AP40894	Curved upper shelf with brackets	370mm
Curved Shelf Front		
AP40885	Curved shelf front	470mm
AP40886	Curved shelf front	570mm
AP40890BL	Adhesive data strip - 2000 × 39mm(H)	All

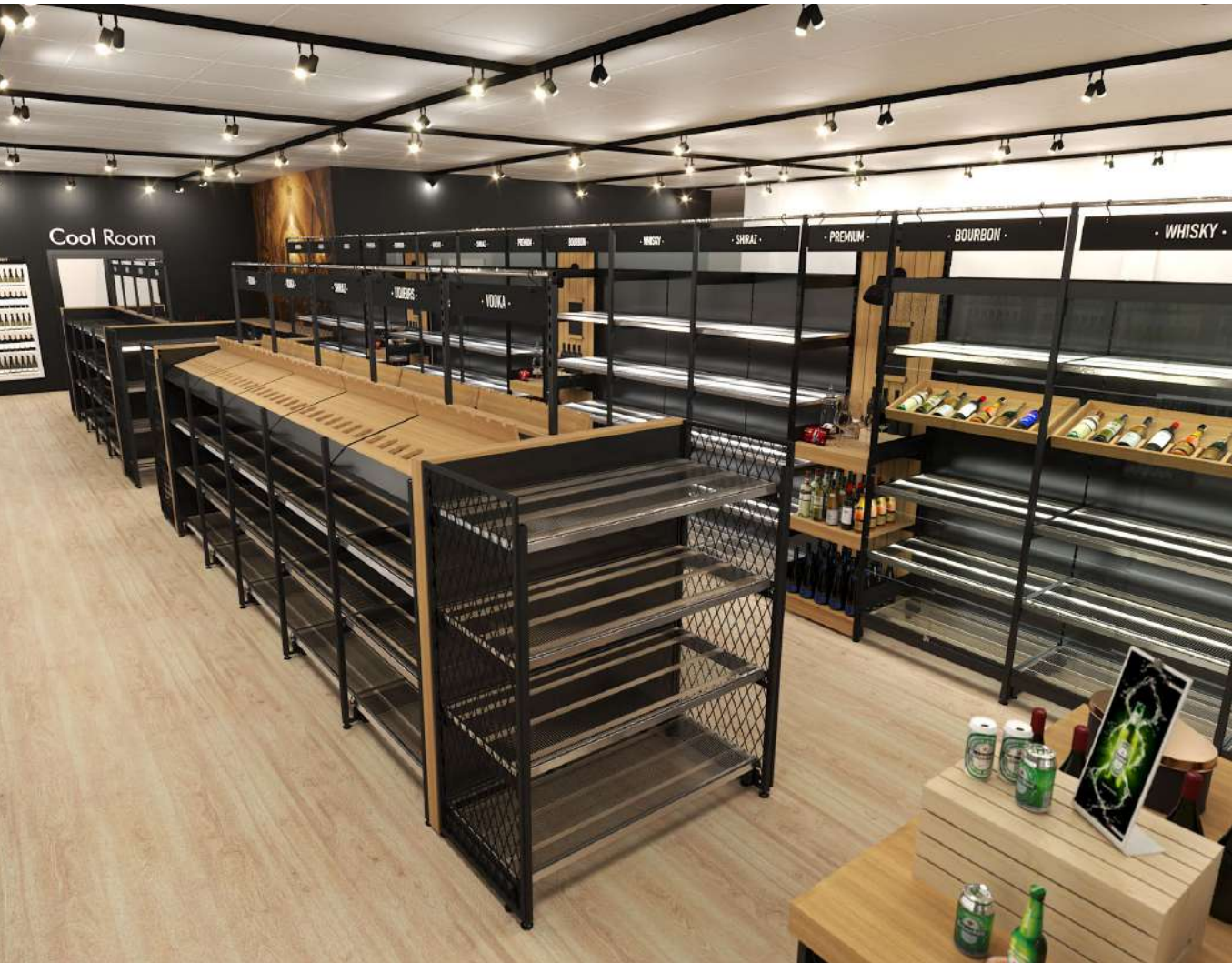
Gondola Shelving - Promoter Shelf



Promoter Shelf

- Promoter Shelf for Double Sided Gondola Bay
- Give your Wine Range a Premium Presentation
- Accomodates 7 x Wine Bottles in Angled (customer facing position)
- Laminate 'Sublime Teak' finish (other colours available on request)

Part No.	Height	Width	Base Shelf Depth	Footprint	Bay Type
AP9749/470		914	470		
AP9749/570		914	570		



Gondola Signage



Gondola Directory Sign

- Fits into standard 80 × 30mm slotted tubing uprights. Steel 'T' piece can be cut to required height
- Supplied with 'S' hooks to suspend the pre-cut signage panels
- Supplied with 8 blank signage panels that can be easily signwritten to suit store design
- Can be supplied with optional top signage panel to maximize branding opportunities
- Clear rigid plastic support strips provide vertical support for taller signs using material up to 2mm thick

Kit supplied with:

- Components for 'T' piece (Black powdercoat finish)
- Four large 'S' hooks (for top tube)
- Twelve small 'S' hooks (for suspending sign panels below)
- Eight plain sign panels with pre-drilled holes & radius corners. Matt Black finish
- OPTIONAL - Top signage panel for 1 or both sides.

Part No.	Height
AP21280	800mm (H) x 750mm (W)
AP21281	Signage disc with attachment - 250mm dia.

Gondola Directory Sign

- Tubular upright posts fits into standard 80 × 30mm slotted tubing uprights
- Horizontal tubes connect tubular upright posts and are supplied with 'S' hooks to suspend the signage panels (supplied by others)
- Allows for almost unrestricted visibility above gondola.

Part No.	Height
AP21290	Tubular upright post - 450mm (H)
AP21291	Horizontal tube with 'S' hooks - 914mm (L)



Gondola Signage



Magnetic 'U' Frames

- Steel open top frame allow for signage material up to 6mm thick
- Allows for creative shaped top designs
- Magnetic feet attach directly to metal top caps

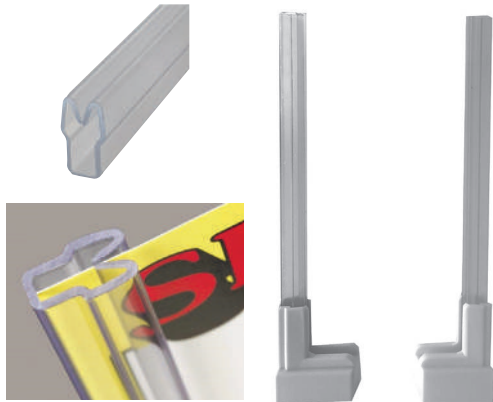
Part No.	Depth
AP21265/06	600
AP21265/09	900



Magnetic Corner Signholder

- Rigid signage panels up to 3mm thick are retained in the slot of this simple signage solution

Part No.	Colour	Depth
AP21270BK	Black	
AP21270WH	White	
AP21270/100	Clear Plastic	100



Magnetic Corner Signholder

Part No.	Colour	Depth
AP21270/100	Clear Plastic	100

*We can supply to your specified length

Premium Trim Upgrade for Gondolas



Premium Trim Upgrade

- Take your Floor Gondolas to the next level with our premium trim upgrades
- Enhanced visual appeal, available in striking 'Sublime Teak' finish (other colours available on request)
- Easy fitment as a replacement for existing top cover on Floor Gondola



Premium Trim Upgrade for Gondolas



Centre Trim

- Trim for horizontal centre section of floor gondola
- Easy installation - replaces top cover
- Sublime Teak finish

Part No.	Length	Width	Base Shelf Depth	Footprint	Bay Type
AP9261TOP-TEA	914 (1 Bay)	80			
AP9262TOP-TEA	1830 (2 Bay)	80			



Vertical Trim

- Trim for External Upright on Gondola End Bay
- Supplied pre-fitted to Upright
- Sublime Teak finish

Part No.	Length	Width	Base Shelf Depth	Footprint	Bay Type
AP40019/14TEA	1510	80			

Wall Shelving - Bays



Low Height Wall/Window Bay

- 4 x shelves per bay (base + 3)

Single Sided Bay - Plain Backpanels					1500H
Part No.	Height	Width	Base Shelf Depth	Footprint	Bay Type
AP9856PL/470MB	1500	914	470	600	Starter
AP9859PL/470MB	1500	914	470	600	Add-On
AP9856PL/570MB	1500	914	570	700	Starter
AP9859PL/570MB	1500	914	570	700	Add-On



Full Height Bay

- 6 x shelves per bay (base + 5)

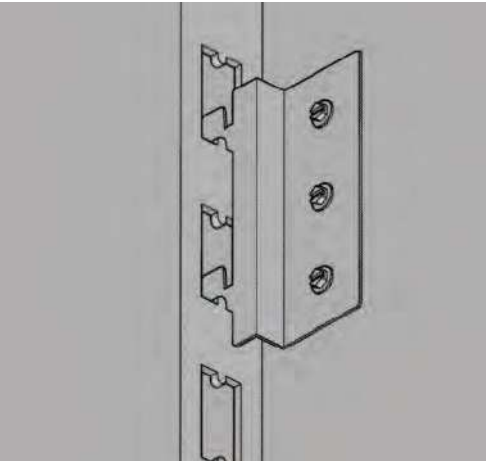
Single Sided Bay - Plain Backpanels					2400H
Part No.	Height	Width	Base Shelf Depth	Footprint	Bay Type
AP9854PL/470MB	2400	914	470	600	Starter
AP9858PL/470MB	2400	914	470	600	Add-On
AP9854PL/570MB	2400	914	570	700	Starter
AP9858PL/570MB	2400	914	570	700	Add-On

Wall Shelving - Bays



Timber End Panels

- Timber End Panels for Wall Bays



Metal Mounting Clip for Melamine End Panels	
Part No.	Description
AP40034MB	Supplied with Black timber screws)

Part No.	Dimensions (L x H)	Shelf Depth
To suit 2400mm High Wall Bays		
AP9773/470BK	600 × 2430	470
AP9779/470BK	700 × 2430	570
To suit 2400mm High Wall bays with Flap Doors (pictured)		
AP9779/470BK	600 × 2480	470
AP9779/570BK	700 × 2480	570
AP9778/470BK	600 × 2630	470
AP9778/570BK	700 × 2630	570

Wall Shelving - Accessories



Overhead Flap Doors

- Melamine flap doors for overhead storage of loose overstock items on top shelf
- Door is self supported by flap arms when accessing top shelf
- Provides brilliant branding opportunities for suppliers
- Add on category signage with our Sign 'C' Channel (available separately - see below)

Part No.	Dimensions (L x H)
AP40776	910 × 400 Centre Flap Door
AP40777	944 × 400 Flap door for left & right ends with melamine end panels (ordered separately)



Signage 'C' Channel - Suit Flap Doors

- Sheetmetal 'C' channel for category signage, to attach to flap doors, back panels or outrigger uprights
- Can be screw fixed or attach with double sided tape

Part No.	Dimensions (L x H)
10100-01-07	910 × 100



Signage 'C' Channel - Suit Flap Doors

- Black sliding door sets for storage on bottom shelf of outrigger bays

Part No.	Dimensions (L x H)
10053-01-01	914 × 400

Premium Wall Displays



Crossbar for Angled Bottle Display

- Crossbar with angled bottle holders for promotional or premium wine display
- Hooks into shelving uprights
- Crossbar available in 2 depths, depending on where you want to display your premium bottles. When using the deeper crossbar, you can use a 300mm deep shelf above for more product - this will give you premium display with backup stock above
- Bottle holders (purchased individually) are removable so that you can spread out the display

Part No.	Dimensions
AP40184	914 × 160 (D)
AP5226	914 × 300 (D)
AP5131	Sloping Bottle Holder - Black finish



Hook-On Signage 'C' Channel

- Very versatile and simple installed system
- Hooks onto the top of any upright (Outrigger & Longspan) or in front of back panels on top of the gondola system

Part No.	Bay Length	Sign Height
AP40751MB	914 (Use on 914mm Gondolas or Longspan bays)	100
AP40752MB	914 (Use on 914mm Gondolas or Longspan bays)	300
AP40754MB	1000 (use on 1000mm Gondola bays)	100
AP40755MB	1230 (use on 1200mm Longspan bays)	100



Wall Shelving - Premium Lockable Wall Shelving Bays

- Many liquor retailers are enjoying the benefits of prominently displaying their valuable spirits with the peace-of-mind of knowing that they will be secure from opportunistic theft
- Glass sliding door kits including top and bottom beams and glass doors with track attached for ease of installation
- Lockable doors slide easily on a quality aluminium roller track system
- Designed to be easily installed on new or existing S-Mart outrigger wall bays
- You can select from our range of standard glass doors heights. Additional sets can be customised to secure your entire display
- Order melamine end panels separately to block off the end of the shelving run



Timber Box for Angled Bottle Display

- Fits into standard shelving uprights using 470mm shelf brackets and "U" channels mounted underneath
- 8-compartment fabricated box in melamine or plywood finishes

Part No.	Dimension
AP40748	914 × 400 × 55 Includes bracket set for mounting to uprights

Wall Shelving - Glass Door Security Wall Shelving

We have developed the following standard door heights to best suit the display of bottles (Door sizes are internal opening height):



1550mm Standard Wall Bay

- Use in standard wall bay, provides security for 4 shelves, leaving base shelf open

Part No.	Description	
AP40769/15	Set of glass doors & beams	914mm bay
AP9769/15	Set of glass doors & beams	1000mm bay

Design Considerations

- Melamine end panels can be provided to close off the ends of glass door bays (see next page)
- If you wish to stop your glass door bays in the middle of a wall run, you can close off the end so that access can't be made into the security area from the open shelving by either of the following methods:
 1. Use full melamine end panel. For this option, you will need to begin another Starter Bay adjacent to the security section.
 2. Purchase 2 Outrigger Shelf Brackets per shelf level and use these to restrict access.



1950mm Standard Wall Bay

- Use in standard wall bay, provides security for 5 shelves

2600mm Standard Wall Bay

- Double set of sliding doors on extended height wall bays - provides full security for 6 shelves, incorporates intermediate horizontal beam above lower 2 shelves

Part No.	Description	
1950mm Standard Wall Bay		
AP40769/19	Set of glass doors & beams	914mm bay
AP9769/19	Set of glass doors & beams	1000mm bay
2600mm Standard Wall Bay		
AP40769/26	Set of glass doors & beams	914mm bay
AP9769/26	Set of glass doors & beams	1000mm bay



800mm Standard Wall Bay

- Provides security for 2 shelves

Part No.	Description	
AP40769/15	Set of glass doors & beams	914mm bay
AP9769/15	Set of glass doors & beams	1000mm bay

Feature Displays - Display Table Concept

- Proven to be a highly successful tool to drive sales in Liquor stores
- Create a stunning focal point in your store.
- Ideal for promotions, tasting nights, product features and more
- Stylish laminated timber benchtop
- Maximise selling/stock capacity below benchtop
- LED Shelf Lighting to all shelves
- Flexible, modular design



Feature Displays - Display Table Concept

- Choice of 1, 2 or 3 bay modules with 2 ends
- Stylish laminated timber benchtop
- LED Shelf Lighting to all shelves



Part No.	Height	Width	Base Shelf Depth	Footprint	Bay Type
CST125	2144	1200	470	1030	
CST125-2	3058	1200	470	1030	
CST125-3	3972	1200	570	1030	

Displays/Stands - Liquor Stands



Round Display Wine Units

- Finish: Black uprights with zinc radius wire shelves

Part No.	Diametre	Height	No. of Shelves
AP40863	680	1500	4
AP40864	820	1500	4
AP40867	820 base, 600mm top	1500	4



4 Sided Wine Display Units

- Finish: Black panels and uprights with black metal shelves

Part No.	Diametre	Height	No. of Shelves
AP9782	850 × 850	1200	16

Displays/Stands - Liquor Stands



Giftware stand with timbershelves & trim



Mobile trolley with feature display top

We can produce custom display stands to suit your individual requirements and to fit in with your design brief.

Our large range of standard components can be put together in creative ways and combined with our customisation resources to produce your desired outcome.

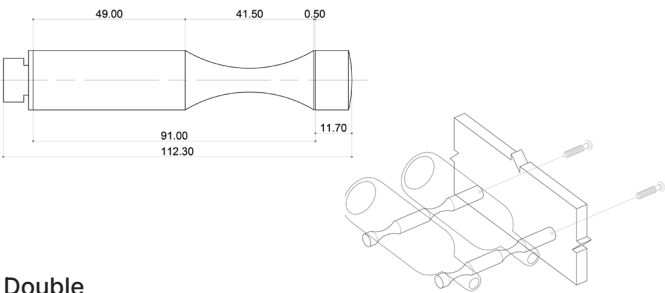
Wine Pegs



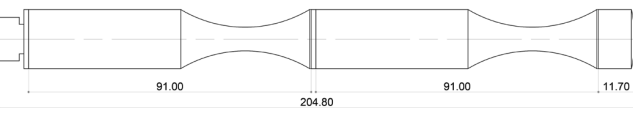
Wine Pegs

- Wine Pegs present an amazing opportunity to create a unique method of displaying premium wines horizontally to create a boutique atmosphere.
- Available in “Label-Forward” or “Cork- Forward” configurations, the Wine Pegs can be mounted onto solid backing panels of various materials.
- The Wine Peg Slider wall system allows for adjustable spacing of “Label Forward” wine bottles with varying densities for seasonal fluctuations.
- The ADP Design Team will be pleased to assist you in developing a configuration that will suit your space and design requirements.

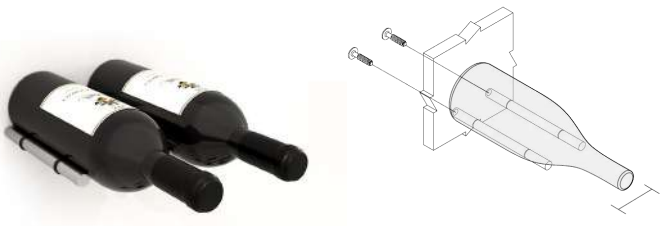
Single



Double



Supplied with bolts to fix on behind a melamine wall panel or with sliding fittings to fit into the “Wine Peg Slider” wall panelling system.



“Label-Forward” Wine Peg Slider

- This amazing panel-based system allows for some creative ways to display your wine collection in all manner of spaces.
- The panels are design to hook onto the wall with heavy-duty aluminium split battens so that they can be lifted off to make alterations if required.
- You can adjust the number of pegs according to the space requirements of your collection.

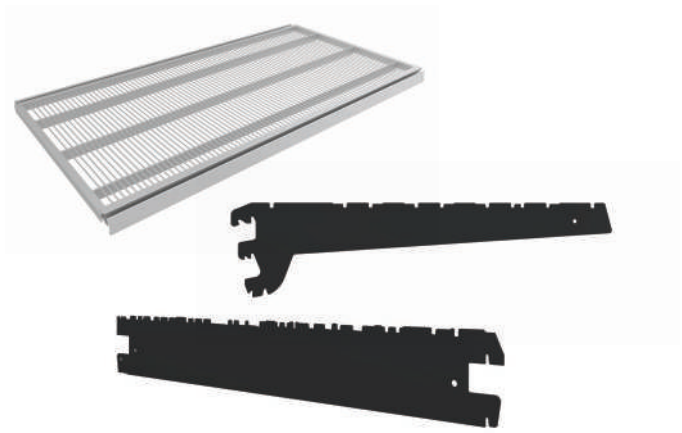
Part No.	Description
AP790	Single. Sold as pair
AP791	Double. Sold as pair

“Cork-Forward” Wine Peg Slider

Part No.	Description
AP792	Sold as pair



Components



Additional Shelf Components

- Additional shelves, brackets and data strips for shelving bays

Part No.	Length	Depth
To suit 2400mm High Wall Bays		
AP40803	914	300
AP40804	914	370
AP40805	914	470
AP40806	914	570
AP40808	914	770
AP40845	1000	470
AP40846	1000	570
AP40875	1250	470
AP40876	1250	570
Cantilever Shelf Brackets		
AP40112	300	2-lug
AP40114	370	2-lug
AP40118	470	3-lug
AP40123	570	3-lug
Cantilever Shelf Brackets		
AP40112	370	
AP40114	470	
AP40118	570	



Timber End Panels

- Timber End Panels for Wall Bays

Part No.	Length	Height	Shelf Depth
To suit 2400mm High Wall Bays			
AP9773/470BK	600	2430	470
AP9779/470BK	700	2430	570
To suit 2400mm High Wall bays with Flap Doors (pictured)			
AP9779/470BK	600	2480	470
AP9779/570BK	700	2480	570
AP9778/470BK	600	2630	470
AP9778/570BK	700	2630	570

Components



Adhesive Data Strip

- Includes “gripper” feature to allow you to simply add promotional tickets
- Black back with clear front to protect price tickets and allow them to be simply changed
- Use for MPR System or any other situation without front shelf lip

Part No.	Length x Label Height
AP587-39BL	914 × 39
AP588-39BL	1200 × 39
AP40890BL **	2000 × 39

** This item has no “gripper” - design for use with radius shelves



Clip On Data Strip

- Leaves no messy adhesive residue - simply clips on to the front lip of S-MART shelves
- Includes “gripper” feature to allow you to simply add promotional tickets
- Black back with clear front to protect price tickets and allow them to be simply changed
- Compatible with many types of coolroom wire shelves

Part No.	Length x Label Height
AP40421/09BL	900 × 32
AP40422/09BL	900 × 39
AP40422/10BL	990 × 39
AP40422/12BL	1240 × 39



Gondola Directory Sign

Part No.	Height
AP21290	Tubular upright post - 450mm (H)
AP21291	Horizontal tube with ‘S’ hooks - 914mm (L)

Contact Us

1800 642 366

www.adpstore.com.au

sales@adpstore.com.au

Sydney

Level 6, 10 Herb Elliot Ave
Sydney Olympic Park, NSW 2127

☎ 1800 642 366

Perth

33 Tamara Drive
Cockburn Central, WA 6164

☎ 1800 642 366

Adelaide

255 Richmond Road
Richmond, SA 5033

☎ 08 7079 2025

Brisbane

Level 4, 97 Boundary Street
West End, QLD 410

☎ 1800 642 366

Melbourne

Unit 4, 2 Thomsons Road
Keilor Park, VIC 3042

☎ 1800 642 366

Auckland

40 Onehunga Mall
Onehunga, Auckland 1061

☎ +64 9 950 8720